



British Columbia Only
Quickie QX Quickship
February 2024



EIF6

Account: _____
 Date: _____
 PO#: _____
 Buyer: _____
 Marked For: _____

Ship To: _____
 Name: _____
 Address: _____
 City, Province, Postal Code: _____
 Phone: _____

Hemi Height Frame 1 Includes:		Retail
196WM94	Quickie QX	\$1,982.00
196FS30	Hemi Frame	STD
196CW7	5" x 1.5" Semi Pneumatic	NC
196CF71	3.5" Caster Fork	NC
196CS1	Standard Caster Stem Bolt	NC
196E2	Medium Extension Tubes	NC
196F3	Aluminum Angle Adjustable Footplate	\$173.00
196HL12	Heel Loops	NC
196RT3	Full Polyurethane Rear Tire	NC
196HR1	Aluminum Anodized Handrim	NC
196WL1	Push-To-Lock Wheel Locks	NC
196EH7	Wheel Lock Extensions	\$72.00
196AX1	Quick Release Axle	NC
196AA65	Flip Back Height Adjustable LITE (10"-15") Inc. clothing guard	\$375.00
196AM24	Full Length Armrest Pad	NC
196B9	Back Height Tall (16" - 20")	NC
196PH6	Integral Push Handles	NC
196BU1	Standard Back Upholstery	NC
196SL1	Seat Sling Standard	NC
196AT86	Anti Tips (Pair) Low Profile	\$119.00
196C2	Black Frame Colour	NC

Hemi Height Frame 2 Includes:		Retail
196WM94	Quickie QX	\$1,982.00
196FS30	Hemi Frame	STD
196CW35	6" x 1.5" Semi Pneumatic	NC
196CF12	5.25" Caster Fork	NC
196CS1	Standard Caster Stem Bolt	NC
196E2	Medium Extension Tubes	NC
196F3	Aluminum Angle Adjustable Footplate	\$173.00
196HL12	Heel Loops	NC
196RT3	Full Polyurethane Rear Tire	NC
196HR1	Aluminum Anodized Handrim	NC
196WL1	Push-To-Lock Wheel Locks	NC
196EH7	Wheel Lock Extensions	\$72.00
196AX1	Quick Release Axle	NC
196AA65	Flip Back Height Adjustable LITE (10"-15") Inc. clothing guard	\$375.00
196AM24	Full Length Armrest Pad	NC
196B9	Back Height Tall (16" - 20")	NC
196PH6	Integral Push Handles	NC
196BU1	Standard Back Upholstery	NC
196SL1	Seat Sling Standard	NC
196AT86	Anti Tips (Pair) Low Profile	\$119.00
196C2	Black Frame Colour	NC

FRAME WIDTH (SELECT ONE)

- 196W7 16" Frame Width NC
- 196W9 18" Frame Width NC
- 196W11 20" Frame Width \$296.00

FRAME WIDTH (SELECT ONE)

- 196W7 16" Frame Width NC
- 196W9 18" Frame Width NC
- 196W11 20" Frame Width \$296.00

SEAT DEPTH (SELECT ONE)

- 196SD9 16" Seat Depth only available w/ 16" width+18" width NC
- 196SD11 18" Seat Depth NC
- 196SD13 20" Seat Depth only available w/ 18" width+20" width \$303.00

SEAT DEPTH (SELECT ONE)

- 196SD9 16" Seat Depth only available w/ 16" width+18" width NC
- 196SD11 18" Seat Depth NC
- 196SD13 20" Seat Depth only available w/ 18" width+20" width \$303.00

Rear Wheel Size

- 196RW103 20" Mag Wheel 5 Spoke NC
- 196RW104 22" Mag Wheel 5 Spoke NC

Rear Wheel Size

- 196RW103 20" Mag Wheel 5 Spoke NC
- 196RW104 22" Mag Wheel 5 Spoke NC

Extension Mount Hangers

- 196H145 60° Swing In/Out Hanger NC

Extension Mount Hangers

- 196H145 60° Swing In/Out Hanger NC
- 196H139 70° Swing In/Out Hanger NC

SEAT HEIGHT MATRIX

	Hemi Frame 1	Hemi Frame 2
Front STFH Available	13"	15" / 15.5"

Options Installed at Sunrise Medical Maple Ridge

Wheel Options

<input type="checkbox"/> 196CW5	5" Caster Wheel		NC
<input type="checkbox"/> 196CF12	5.25 Fork	<input type="checkbox"/> 196CS1	STD. Stem
<input type="checkbox"/> 196CF17	6 Fork	<input type="checkbox"/> 196CS5	3/4 Stem
<input type="checkbox"/> 196CF23	7 Fork	<input type="checkbox"/> 196CS9	1 1/2 Stem
<input type="checkbox"/> 196CW34	6" Caster Wheel		NC
<input type="checkbox"/> 196CF12	5.25 Fork	<input type="checkbox"/> 196CS1	STD. Stem
<input type="checkbox"/> 196CF17	6 Fork	<input type="checkbox"/> 196CS5	3/4 Stem
<input type="checkbox"/> 196CF23	7 Fork	<input type="checkbox"/> 196CS9	1 1/2 Stem
<input type="checkbox"/> 196CW32	8" Caster Wheel		NC
<input type="checkbox"/> 196CF12	5.25 Fork	<input type="checkbox"/> 196CS1	STD. Stem
<input type="checkbox"/> 196CF17	6 Fork	<input type="checkbox"/> 196CS5	3/4 Stem
<input type="checkbox"/> 196CF23	7 Fork	<input type="checkbox"/> 196CS9	1 1/2 Stem
<input type="checkbox"/> 196RW102	24" Mag Wheel 5 Spoke		NC

Part Options

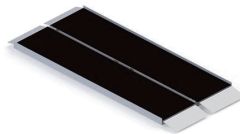
<input type="checkbox"/> 196F1	Composite Footplate		NC
<input type="checkbox"/> 196H160	Elevating Hanger - EXT. Mount		\$334.00
<input type="checkbox"/> 196E1	Short		NC
<input type="checkbox"/> 196E2	Medium		NC
<input type="checkbox"/> 196E5	Long		NC
(196F5 Aluminum Foot Plate Included)			
<input type="checkbox"/> Tension Adjustable Back Upholstery Tall (Quickie Style)			\$359.00
<input type="checkbox"/> 16" 684059	<input type="checkbox"/> 18" 684079	<input type="checkbox"/> 20" 684099	



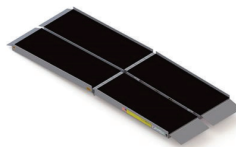
Available at our Maple Ridge Warehouse

Portable Folding Ramps

Advantage Series Suitcase Plus Selected Others

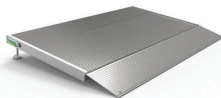


Advantage Series Trifold Plus Accessories

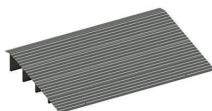


Transitions Threshold Ramps

Selected Angled Entry Ramps & Mats



Modular Entry Ramps & Mats



Caster	3.5" FORK				5 1/4" FORK			
	STD		HEMI		STD		HEMI	
	Min	Max	Min	Max	Min	Max	Min	Max
4 Low Poly	14.5	15.0	12.5	13.0	16.0	17.0	14.0	15.0
4 x 1.25 Semi Pneu	15.0	15.5	13.0	13.5	16.5	17.5	14.5	15.5
5 Low Poly	15.0	15.5	13.0	13.5	16.5	17.5	14.5	15.5
5 x 1.5 Semi Pneu	15.0	15.5	13.0	13.5	16.5	17.5	14.5	15.5
6 Poly	N/A	N/A	N/A	N/A	17.0	18.0	15.0	16.0
6 x 1.5 Semi Pneu	N/A	N/A	N/A	N/A	17.0	18.0	15.0	16.0
8 Poly	N/A	N/A	N/A	N/A	19.0	19.0	17.0	17.0
8 x 1.5 Semi Pneu	N/A	N/A	N/A	N/A	18.5	19.0	16.5	17.0
Caster	6" FORK				7" FORK			
	STD		HEMI		STD		HEMI	
	Min	Max	Min	Max	Min	Max	Min	Max
4 Low Poly	17.0	18.0	15.0	16.0	18.0	19.0	16.0	17.0
4 x 1.25 Semi Pneu	17.0	18.0	15.0	16.0	18.0	19.0	16.0	17.0
5 Low Poly	17.5	18.5	15.5	16.5	18.5	19.5	16.5	17.5
5 x 1.5 Semi Pneu	17.5	18.5	15.5	16.5	18.5	19.5	16.5	17.5
6 Poly	17.5	19.0	15.5	17.0	18.5	19.5	16.5	18.0
6 x 1.5 Semi Pneu	17.5	19.0	15.5	17.0	18.5	19.5	16.5	18.0
8 Poly	19.5	19.5	17.5	18.0	19.5	19.5	17.5	19.0
8 x 1.5 Semi Pneu	18.5	19.5	16.5	17.5	19.0	19.5	17.0	18.5

Seat squeeze and seat depth can affect FSH availability

Caster	3.5" FORK				5 1/4" FORK			
	STD		HEMI		STD		HEMI	
	Min	Max	Min	Max	Min	Max	Min	Max
4 Low Poly	N/A	N/A	N/A	N/A	17.0	18.0	14.0	15.0
4 x 1.25 Semi Pneu	N/A	N/A	N/A	N/A	17.0	18.0	14.5	15.5
5 Low Poly	N/A	N/A	N/A	N/A	17.5	18.5	14.5	15.5
5 x 1.5 Semi Pneu	N/A	N/A	N/A	N/A	17.5	18.5	14.5	15.5
6 Poly	N/A	N/A	N/A	N/A	17.5	18.5	15.0	16.0
6 x 1.5 Semi Pneu	N/A	N/A	N/A	N/A	17.5	18.5	15.0	16.0
8 Poly	N/A	N/A	N/A	N/A	N/A	N/A	17.0	17.0
8 x 1.5 Semi Pneu	N/A	N/A	N/A	N/A	19.5	19.5	16.5	17.0
Caster	6" FORK				7" FORK			
	STD		HEMI		STD		HEMI	
	Min	Max	Min	Max	Min	Max	Min	Max
4 Low Poly	17.5	18.5	15.5	16.5	18.5	19.5	16.5	17.5
4 x 1.25 Semi Pneu	17.5	18.5	15.5	16.5	18.5	19.5	16.5	17.5
5 Low Poly	18.0	19.0	16.0	17.0	19.0	19.5	17.0	18.0
5 x 1.5 Semi Pneu	18.0	19.0	16.0	17.0	19.0	19.5	17.0	18.0
6 Poly	18.0	19.5	16.0	17.5	19.0	19.5	17.0	18.5
6 x 1.5 Semi Pneu	18.0	19.5	16.0	17.5	19.0	19.5	17.0	18.5
8 Poly	N/A	N/A	18.0	18.5	N/A	N/A	18.0	19.5
8 x 1.5 Semi Pneu	19.5	19.5	17.5	18.5	N/A	N/A	18.0	19.5

Seat squeeze and seat depth can affect FSH availability

Caster	3.5" FORK				5 1/4" FORK			
	STD		HEMI		STD		HEMI	
	Min	Max	Min	Max	Min	Max	Min	Max
4 Low Poly	N/A	N/A	N/A	N/A	17.5	18.5	17.5	18.5
4 x 1.25 Semi Pneu	N/A	N/A	N/A	N/A	17.5	18.5	17.5	18.5
5 Low Poly	N/A	N/A	N/A	N/A	18.0	19.0	18.0	19.0
5 x 1.5 Semi Pneu	N/A	N/A	N/A	N/A	18.0	19.0	18.0	19.0
6 Poly	N/A	N/A	N/A	N/A	18.5	19.5	18.5	19.5
6 x 1.5 Semi Pneu	N/A	N/A	N/A	N/A	18.5	19.5	18.5	19.5
8 Poly	N/A	N/A	N/A	N/A	N/A	N/A	N/A	N/A
8 x 1.5 Semi Pneu	N/A	N/A	N/A	N/A	N/A	N/A	N/A	N/A
Caster	6" FORK				7" FORK			
	STD		HEMI		STD		HEMI	
	Min	Max	Min	Max	Min	Max	Min	Max
4 Low Poly	18.5	19.5	16.5	17.5	19.5	19.5	17.5	18.5
4 x 1.25 Semi Pneu	18.5	19.5	16.5	17.5	19.5	19.5	17.5	18.5
5 Low Poly	19.0	19.5	17.0	18.0	N/A	N/A	18.0	19.0
5 x 1.5 Semi Pneu	19.0	19.5	17.0	18.0	N/A	N/A	18.0	19.0
6 Poly	18.5	19.5	16.5	18.0	19.5	19.5	17.5	19.0
6 x 1.5 Semi Pneu	19.5	19.5	16.5	18.0	19.5	19.5	17.5	19.0
8 Poly	N/A	N/A	19.0	19.5	N/A	N/A	19.0	19.5
8 x 1.5 Semi Pneu	N/A	N/A	18.0	19.0	N/A	N/A	18.5	19.5

Seat squeeze and seat depth can affect FSH availability



JAY® Bundling Quickship

SUPPORTS

LATERAL THORACIC SUPPORT (Fixed)

<input type="checkbox"/>	J3LAT4X4FX	LATERAL 4" Depth X 4" Height FIXED	\$330.00	<input type="checkbox"/>	J3LAT6X4FX	LATERAL 6" Depth X 4" Height FIXED	\$330.00
<input type="checkbox"/>	J3LAT4X5FX	LATERAL 4" Depth X 5" Height FIXED	\$330.00	<input type="checkbox"/>	J3LAT6X5FX	LATERAL 6" Depth X 5" Height FIXED	\$330.00
<input type="checkbox"/>	J3LAT4x6FX	LATERAL 4" Depth X 6" Height FIXED	\$330.00	<input type="checkbox"/>	J3LAT6X6FX	LATERAL 6" Depth X 6" Height FIXED	\$330.00

Swing-Away Lateral Thoracic Support


Includes: Swing-away mounting hardware, left and right lateral are independent. Different types and sizes can be selected for each side.

<input type="checkbox"/>	JLATSA44L	LAT 4X4 W/ S/A MOUNTS - LH	\$329.00	<input type="checkbox"/>	JLATSA44R	LAT 4X4 W/ S/A MOUNTS - RH	\$329.00
	JLAT4X4	Lateral 4" Depth X 4" Height			JLAT4X4	Lateral 4" Depth X 4" Height	
	JSAMNTL	Lateral Swing Away Mount - Left			JSAMNTR	Lateral Swing Away Mount - Right	
<input type="checkbox"/>	JLATSA45L	LAT 4X5 W/ S/A MOUNTS - LH	\$329.00	<input type="checkbox"/>	JLATSA45R	LAT 4X5 W/ S/A MOUNTS - RH	\$329.00
	JLAT4X4	Lateral 4" Depth X 5" Height			JLAT4X5	Lateral 4" Depth X 5" Height	
	JSAMNTL	Lateral Swing Away Mount - Left			JSAMNTR	Lateral Swing Away Mount - Right	
<input type="checkbox"/>	JLATSA46L	LAT 4X6 W/ S/A MOUNTS - LH	\$329.00	<input type="checkbox"/>	JLATSA46R	LAT 4X6 W/ S/A MOUNTS - RH	\$329.00
	JLAT4X6	Lateral 4" Depth X 6" Height			JLAT4X5	Lateral 4" Depth X 6" Height	
	JSAMNTL	Lateral Swing Away Mount - Left			JSAMNTR	Lateral Swing Away Mount - Right	
<input type="checkbox"/>	JLATSA64L	LAT 6X4 W/ S/A MOUNTS - LH	\$329.00	<input type="checkbox"/>	JLATSA64R	LAT 6X4 W/ S/A MOUNTS - RH	\$329.00
	JLAT6X4	Lateral 6" Depth X 4" Height			JLAT6X4	Lateral 6" Depth X 4" Height	
	JSAMNTL	Lateral Swing Away Mount - Left			JSAMNTR	Lateral Swing Away Mount - Right	
<input type="checkbox"/>	JLATSA65L	LAT 6X5 W/ S/A MOUNTS - LH	\$329.00	<input type="checkbox"/>	JLATSA65R	LAT 6X5 W/ S/A MOUNTS - RH	\$329.00
	JLAT6X5	Lateral 6" Depth X 5" Height			JLAT6X5	Lateral 6" Depth X 5" Height	
	JSAMNTL	Lateral Swing Away Mount - Left			JSAMNTR	Lateral Swing Away Mount - Right	
<input type="checkbox"/>	JLATSA66L	LAT 6X6 W/ S/A MOUNTS - LH	\$329.00	<input type="checkbox"/>	JLATSA66R	LAT 6X6 W/ S/A MOUNTS - RH	\$329.00
	JLAT6X6	Lateral 6" Depth X 6" Height			JLAT6X6	Lateral 6" Depth X 6" Height	
	JSAMNTL	Lateral Swing Away Mount - Left			JSAMNTR	Lateral Swing Away Mount - Right	




JAY® Bundling Quickship

HEADREST


14" Plush Pad	
	P1400L ☐\$270.00

OR

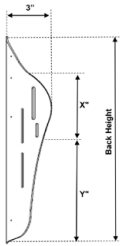
Adjust-A-Plush Standard	
	P8088L ☐\$438.00


Lin X Core Mount & Hardware	
	LX7000Q ☐\$178.00 *No tools required

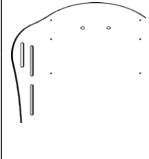
AND

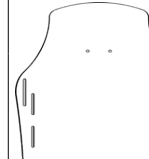
Detachable Mounting Bracket	
	M2300 ☐\$157.00

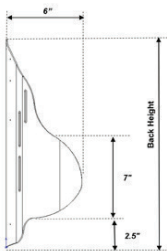
BACK

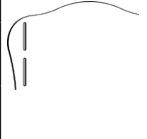


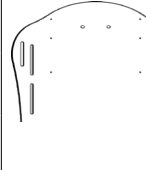
Mid Thoracic (MT)	Width	15.0" (Height)
	16"	J3PLMTT16SH ☐\$889.00
	18"	J3PLMTT18SH ☐\$889.00
	20"	J3PLMTT20SH ☐\$889.00


Upper Thoracic (UT)	Width	18.0" (Height)
	16"	J3PLUTM16SH ☐\$971.00
	18"	J3PLUTM18SH ☐\$971.00
	20"	J3PLUTM20SH ☐\$971.00

Shoulder Height (SH)	Width	21.0" (Height)
	16"	J3PLSHS16SH ☐\$1,000.00
	18"	J3PLSHS18SH ☐\$1,000.00
	20"	J3PLSHS20SH ☐\$1,000.00





Mid Thoracic (MT)	Width	15.0" (Height)
	16"	J3PDMTT16SH ☐\$952.00
	18"	J3PDMTT18SH ☐\$952.00
	20"	J3PDMTT20SH ☐\$952.00

Upper Thoracic (UT)	Width	18.0" (Height)
	16"	J3PDUTM16SH ☐\$1,067.00
	18"	J3PDUTM18SH ☐\$1,067.00
	20"	J3PDUTM20SH ☐\$1,067.00

Shoulder Height (SH)	Width	21.0" (Height)
	16"	J3PDSHS16SH ☐\$1,143.00
	18"	J3PDSHS18SH ☐\$1,143.00
	20"	J3PDSHS20SH ☐\$1,143.00

CUSHION

JAY Fusion Cushion		
	JFUSIONXXYY Note: XX= Width and YY = Depth	
	XX: _____ YY: _____	<input type="checkbox"/> Fluid OR <input type="checkbox"/> Air single valve <input type="checkbox"/> Reduced profile
Extra Cover	CJFUSIONXXYY XX: _____ YY: _____	<input type="checkbox"/> \$153.00

JAY Union Cushion		
	JUXXYY Note: XX= Width and YY = Depth	
	XX: _____ YY: _____	<input type="checkbox"/> Reduced profile

POSITIONING

<input type="checkbox"/>	JARM18F	Arm Trough 18" Long w/Fx Mnt Hdw	\$358.00
<input type="checkbox"/>	JARM22F	Arm Trough 22" Long w/Fx Mnt Hdw	\$358.00
<input type="checkbox"/>	JARM18SA	Arm Trough 18" Long w/ SA Hdw	\$358.00
<input type="checkbox"/>	JARM22SA	Arm Trough 22" Long w/ SA Hdw	\$358.00
<input type="checkbox"/>	JFOOTSS	Footbox Single Std Ht	\$381.00
<input type="checkbox"/>	JFOOTST	Footbox Single Tall Ht	\$381.00
<input type="checkbox"/>	JFOOT16S	Full Foot Box 16w Std Ht.	\$520.00
<input type="checkbox"/>	JFOOT18S	Full Foot Box 18w Std Ht.	\$520.00
<input type="checkbox"/>	JFOOT20S	Full Foot Box 20w Std Ht.	\$547.00

<input type="checkbox"/>	JFOOT16T	Full Foot Box 16w Tall Ht.	\$587.00
<input type="checkbox"/>	JFOOT18T	Full Foot Box 18w Tall Ht.	\$587.00
<input type="checkbox"/>	JFOOT20T	Full Foot Box 20w Tall Ht.	\$675.00
<input type="checkbox"/>	PLS3010	Padded Calf Panel - Small (14 W)	\$149.00
<input type="checkbox"/>	PLS3020	Padded Calf Panel - Medium (16 W)	\$149.00
<input type="checkbox"/>	PLS3030	Padded Calf Panel - Large (18 W)	\$149.00
<input type="checkbox"/>	APB7242	1.5' Belt - Small	\$189.00
<input type="checkbox"/>	APB7243	1.5' Belt - Medium	\$189.00
<input type="checkbox"/>	APB7244	1.5' Belt - Large	\$189.00